


» £ View offers

»  Book a test drive

»  View brochure

# » The new smart **fortwo**



Prices.



Valid from June 2015.

» **smart fortwo.**

## Model prices.

**71 hp (52 kW) petrol**

3-cylinder in-line engine, 999 cc,

**5-speed manual transmission** with automatic start/stop system

Model line	Total RRP excl. VAT (£)	Total RRP incl. VAT (£)	Vehicle Excise Duty (£) <sup>1</sup>	Rec. OTR price (£) <sup>2</sup>	P11D value (£)	BIK tax rate 2015/16 (%)
passion	8,975.00	10,770.00	0.00	11,125.00	11,070.00	13
passion Premium	9,637.50	11,565.00	0.00	11,920.00	11,865.00	13
prime	9,554.17	11,465.00	0.00	11,820.00	11,765.00	13
prime Premium	10,216.67	12,260.00	0.00	12,615.00	12,560.00	13
prime Premium Plus	10,633.33	12,760.00	0.00	13,115.00	13,060.00	13
proxy	9,554.17	11,465.00	0.00	11,820.00	11,765.00	13
proxy Premium	10,216.67	12,260.00	0.00	12,615.00	12,560.00	13
proxy Premium Plus	10,633.33	12,760.00	0.00	13,115.00	13,060.00	13
edition #1	10,725.00	12,870.00	0.00	13,225.00	13,170.00	13

**71 hp (52 kW) petrol**

3-cylinder in-line engine, 999 cc,

**twinamic 6-speed dual clutch automatic transmission** with automatic start/stop system

Model line	Total RRP excl. VAT (£)	Total RRP incl. VAT (£)	Vehicle Excise Duty (£) <sup>1</sup>	Rec. OTR price (£) <sup>2</sup>	P11D value (£)	BIK tax rate 2015/16 (%)
passion	9,804.17	11,765.00	0.00	12,120.00	12,065.00	13
passion Premium	10,466.67	12,560.00	0.00	12,915.00	12,860.00	13
prime	10,383.33	12,460.00	0.00	12,815.00	12,760.00	13
prime Premium	11,045.83	13,255.00	0.00	13,610.00	13,555.00	13
prime Premium Plus	11,462.50	13,755.00	0.00	14,110.00	14,055.00	13
proxy	10,383.33	12,460.00	0.00	12,815.00	12,760.00	13
proxy Premium	11,045.83	13,255.00	0.00	13,610.00	13,555.00	13
proxy Premium Plus	11,462.50	13,755.00	0.00	14,110.00	14,055.00	13
edition #1	11,554.17	13,865.00	0.00	14,220.00	14,165.00	13

<sup>1</sup>A different first year rate of Vehicle Excise Duty (Road Fund Licence) applies for new cars. For full table of Vehicle Excise Duty rates see page 19.<sup>2</sup>Recommended on-the-road price; these prices reflect the Road Fund Licence applicable to the standard model plus £355.00 additional costs necessary to put your car on the road. Included are a standard UK delivery charge (£240 incl. VAT), new vehicle registration fee (£55), number plates (£25 incl. VAT) and fuel (£35 incl. VAT) is calculated at the standard rate of 20%. Prices and specifications are subject to change without prior notice.

» **smart fortwo.**

## Model prices.

**90 hp (66 kW) petrol**

3-cylinder in-line turbocharged engine, 898 cc,

**5-speed manual transmission** with automatic start/stop system

Model line	Total RRP excl. VAT (£)	Total RRP incl. VAT (£)	Vehicle Excise Duty (£) <sup>1</sup>	Rec. OTR price (£) <sup>2</sup>	P11D value (£)	BIK tax rate 2015/16 (%)
passion	9,470.83	11,365.00	0.00	11,720.00	11,665.00	13
passion Premium	10,133.33	12,160.00	0.00	12,515.00	12,460.00	13
prime	10,050.00	12,060.00	0.00	12,415.00	12,360.00	13
prime Premium	10,712.50	12,855.00	0.00	13,210.00	13,155.00	13
prime Premium Plus	11,129.17	13,355.00	0.00	13,710.00	13,655.00	13
proxy	10,050.00	12,060.00	0.00	12,415.00	12,360.00	13
proxy Premium	10,712.50	12,855.00	0.00	13,210.00	13,155.00	13
proxy Premium Plus	11,129.17	13,355.00	0.00	13,710.00	13,655.00	13
edition #1	11,220.83	13,465.00	0.00	13,820.00	13,765.00	13

**90 hp (66 kW) petrol**

3-cylinder in-line turbocharged engine, 898 cc,

**twinamic 6-speed dual clutch automatic transmission** with automatic start/stop system system

Model line	Total RRP excl. VAT (£)	Total RRP incl. VAT (£)	Vehicle Excise Duty (£) <sup>1</sup>	Rec. OTR price (£) <sup>2</sup>	P11D value (£)	BIK tax rate 2015/16 (%)
passion	10,300.00	12,360.00	0.00	12,715.00	12,660.00	14
passion Premium	10,962.50	13,155.00	0.00	13,510.00	13,455.00	14
prime	10,879.17	13,055.00	0.00	13,410.00	13,355.00	14
prime Premium	11,541.67	13,850.00	0.00	14,205.00	14,150.00	14
prime Premium Plus	11,958.33	14,350.00	0.00	14,705.00	14,650.00	14
proxy	10,879.17	13,055.00	0.00	13,410.00	13,355.00	14
proxy Premium	11,541.67	13,850.00	0.00	14,205.00	14,150.00	14
proxy Premium Plus	11,958.33	14,350.00	0.00	14,705.00	14,650.00	14
edition #1	12,050.00	14,460.00	0.00	14,815.00	14,760.00	14

## » smart Finance

## New smart fortwo passion 71 hp (52 kW), manual with optional metallic paint

36 monthly payments of <sup>1)</sup>	£139.00	Purchase activation fee <sup>2)</sup>	£10.00
On-the-road price	£11,420.00	Amount of credit	£9,172.46
Customer deposit	£1,687.76	Total amount payable <sup>3)</sup>	£12,711.54
Retailer deposit contribution	£559.78	Representative APR	6.0% APR
Duration of agreement	36 months	Fixed interest rate	5.76%
Optional purchase payment <sup>2)</sup>	£5,450.00		

Example offers – 5.9% APR Representative	Matt	Metallic	solid	On-the-road price	Customer deposit	Retailer deposit contribution	36 monthly payments of <sup>1)</sup>
New smart fortwo prime	○	-	-	£12,215.00	£1,816.21	£559.78	£149.00
New smart fortwo proxy	-	○	-	£12,115.00	£1,716.21	£559.78	£149.00
New smart fortwo edition #1	-	-	●	£13,225.00	£1,514.16	£559.78	£169.00

○ Optional ● Standard - Not available

Whilst these offers are only available with smart Finance, our Retailers do arrange finance on behalf of other finance companies as well.

## Motor Insurance by smart

- 24/7 UK accident recovery
- We use only smart GenuineParts
- 180 days' cover as standard for temporary visits to most of mainland Europe (up to 3 months in one trip)
- To qualify for up to 10% discount online, go to [www.thesmart.co.uk/motorinsurance](http://www.thesmart.co.uk/motorinsurance)
- Alternatively, call Motor Insurance by smart now on **0345 603 3330** for an annual quote

We may decline to quote in some instances. Underwritten by Aviva Insurance Limited. For joint protection calls may be recorded and/or monitored. Our lines are open Monday - Friday 8:30am - 6:00pm and Saturdays 9:00am - 2:00pm.

## Service Care

- smart trained Technicians
- Maintained by smart Official Retailers
- Meets requirements of smart Agility finance agreement

Orders/credit approvals on selected new smart fortwo models, between 1 April and 30 June 2015, registered by 30 September 2015. Some combinations of features/options may not be available. Please contact your local smart Retailer for availability.

1) Based on a smart Agility agreement and 7,000 miles per annum. Vehicle condition, excess mileage and other charges may be payable. Quotations available on request for alternative contract lengths and mileages. Guarantees and indemnities may be required. Terms and conditions apply. Credit provided subject to status from Mercedes-Benz Financial Services UK Ltd, MK15 8BA.

2) Payable if you exercise the option to purchase the car. Guaranteed future value if you choose to hand back the vehicle at the end of the contract.

3) Includes optional purchase payment, purchase activation fee and Retailer deposit contribution.

» **Standard equipment features.****Exterior**

- › Exterior mirrors – manually adjustable
- › Exterior mirror caps in tridion colour
- › Headlamps – H4 halogen
- › LED daytime running lights
- › Lockable service bonnet
- › Painted door handles
- › Painted front grille
- › Rear spoiler
- › Rear windscreen – heated, with timer control
- › Rear windscreen wiper with intermittent wiper control and automatic wipe/wash function
- › Side indicators in white
- › Tail lights
- › Third rear brake light
- › tridion safety cell – black

**Interior**

- › Centre console with pull-out tray and double cup holder
- › Dashboard and door centre panel in fabric and highlights in contrast colour
- › Gear shift lever – trimmed in leather
- › Interior door opener in matt chrome
- › Interior lighting incl. reading light for driver and passenger
- › Load-lashing eyes in luggage compartment
- › Lockable glove compartment
- › Luggage compartment cover
- › Luggage compartment lighting
- › Map pockets on driver and passenger seatbacks
- › Passenger seat with through-loading function (flat-folding seatback)
- › Steering wheel – multi-function 3-spoke, trimmed in leather
- › Storage compartment in front doors
- › Storage compartment in tailgate
- › Sunglasses holders
- › Vanity mirror in sun visor with parking ticket holder for driver and passenger

**Functions and electrics**

- › 12 volt socket with cover
- › Automatic climate control
- › Central locking with radio remote control, visual locking-verification signal
- › Electric windows
- › Instrument cluster with multi-functional 3.5 inch colour display
- › Onboard computer
- › Outside temperature display with frost warning
- › smart Audio-System: matrix display; FM and AM tuner (LW and MW), each with 6 station presets; USB connection for external audio devices (e.g. USB stick, MP3 player); AUX connection; audio streaming via Bluetooth® connection; telephone connectivity via Bluetooth®; volume control via the multifunction steering wheel; interface for integration of the optional smartphone holder; 2 lower mid-range speakers in the doors; free of charge: smart cross connect for iOS and selected Android smartphones

**Technical features**

---

- › 5-speed manual transmission
- › Automatic start/stop function
- › Direct-Steer system with speed-sensitive power assistance and variable steering ratio
- › Fuel tank (35 litres)

**Safety and assistance systems**

---

- › Airbag – kneebag for driver
- › Airbags – driver and passenger airbags
- › Airbags – sidebags for driver and front passenger (combined head/thorax airbags)
- › Alarm system with immobiliser
- › Anti-lock braking system (abs)
- › Brake Assist
- › Breakdown kit
- › Central locking with convenience closing features
- › Crash sensor for activation of hazard warning lights
- › Crosswind assist
- › Cruise control with Speedtronic variable speed limiter
- › Door mirror with aspherically curved mirror glass on the driver's side
- › Drive lock – doors locked automatically when vehicle is on the move
- › electronic stability programme (esp®)
- › Hill start assist
- › ISOFIX child seat attachment point on passenger seat
- › Pedestrian impact protection front and side
- › Seat belts – three-point, with seat belt tensioners and belt force limiters
- › Seat belt reminder for driver and passenger
- › tridion safety cell
- › Tyre pressure monitoring system

## » Specific features of the equipment lines.

passion, prime and proxy.

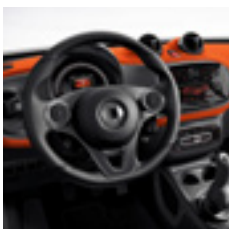
### passion [ICLA]



15" 8-spoke alloy wheels painted in silver



Automatic climate control and smart Audio-System



Dashboard and door centre panel in orange fabric, accent trim parts in black/grey and seats with black/orange fabric upholstery



Alternatively, dashboard and door centre panel in black fabric, accent trim parts in white and seats with black/white fabric upholstery



Or dashboard and door centre panel in black fabric, accent trim parts in dark grey and seats with black/grey fabric upholstery

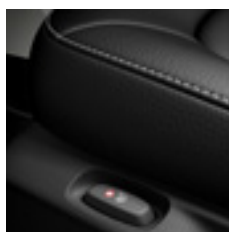
### prime [ICVA]



15" 5-twin-spoke alloy wheels painted in black with a high-sheen finish



Dashboard and door centre panel in black fabric, accent trim parts in grey/black and seats with black leather upholstery with grey topstitching



Heated seats for driver and passenger



Lane Keeping Assist with acoustic and visual warning

### proxy [ICTA]



16" 8-Y-spoke alloy wheels painted in black



Dashboard and door centre panel in blue fabric, accent trim parts in white and seats in leather look/fabric in white/blue



Sports package: multi-function sports steering wheel in perforated leather, lowered suspension by 10 mm, exhaust finisher in chrome, stainless steel sports pedals

## » Specific features of the equipment lines. passion, prime and proxy.

passion	prime	proxy
<b>Exterior</b> <ul style="list-style-type: none"> <li>&gt; 15" 8-spoke alloy wheels painted in silver</li> <li>&gt; Radiator trim in black</li> <li>&gt; Solid roof in black</li> </ul> <b>Interior</b> <ul style="list-style-type: none"> <li>&gt; Dashboard and door centre panel in orange fabric</li> <li>&gt; Upholstery in black/orange fabric</li> <li>&gt; Alternative of dashboard and door centre panel in black fabric</li> <li>&gt; Alternative upholstery in black/white fabric</li> <li>&gt; Alternative upholstery in black/grey fabric</li> </ul>	<b>Exterior</b> <ul style="list-style-type: none"> <li>&gt; 15" 5-twin-spoke alloy wheels painted in black with a high-sheen finish</li> <li>&gt; Panoramic roof with sun protection<sup>1</sup></li> <li>&gt; Radiator trim in black<sup>2</sup></li> </ul> <b>Interior</b> <ul style="list-style-type: none"> <li>&gt; Dashboard and door centre panel in black fabric</li> <li>&gt; Dashboard instruments with cockpit clock and rev counter</li> <li>&gt; Grab handle for front passenger</li> <li>&gt; Upholstery in black leather with grey topstitching</li> </ul> <b>Functions and electrics</b> <ul style="list-style-type: none"> <li>&gt; Heated seats for driver and front passenger</li> </ul> <b>Safety and assistance systems</b> <ul style="list-style-type: none"> <li>&gt; Lane Keeping Assist with acoustic and visual warning</li> </ul>	<b>Exterior</b> <ul style="list-style-type: none"> <li>&gt; 16" 8-Y-spoke alloy wheels painted in black</li> <li>&gt; Panoramic roof with sun protection<sup>1</sup></li> <li>&gt; Radiator trim in white<sup>3</sup></li> </ul> <b>Interior</b> <ul style="list-style-type: none"> <li>&gt; Dashboard and door centre panel in blue fabric</li> <li>&gt; Dashboard instruments with cockpit clock and rev counter</li> <li>&gt; Grab handle for front passenger</li> <li>&gt; Upholstery in leather look/fabric in white/blue</li> </ul> <b>Safety and assistance systems</b> <ul style="list-style-type: none"> <li>&gt; Lane Keeping Assist with acoustic and visual warning</li> </ul> <b>Sports package</b> <ul style="list-style-type: none"> <li>&gt; 3-spoke multi-function sports steering wheel in perforated leather (with gear shift paddles for models with twinamic automatic transmission)</li> <li>&gt; Brushed stainless steel sports pedals with rubber studs</li> <li>&gt; Exhaust system with chrome-plated tailpipe</li> <li>&gt; Sports suspension lowered by 10 mm</li> </ul>

<sup>1</sup>Including sunglasses holder for driver and grab handle for front passenger.

<sup>2</sup>Alternatively in white or cool silver at no additional cost.

<sup>3</sup>Alternatively in black or cool silver at no additional cost.



## » Specific features of the edition #1.

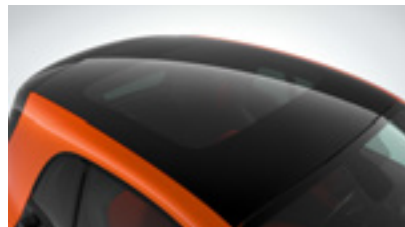
## edition #1 [P88]



edition #1



16" 8-Y-spoke alloy wheels painted in black, with front tyres: 185/50 R 16; rear tyres: 205/45 R 16



Panoramic roof with sun protection

**Exterior**

- > bodypanels in white
- > Door mirror caps in tridion colour
- > edition #1 badge in mirror triangle
- > Panoramic roof with sun protection<sup>1</sup>
- > Radiator trim in white
- > tridion safety cell in lava orange

**Interior**

- > Dashboard and door centre panel in orange fabric and black highlights
- > Dashboard instruments with cockpit clock and rev counter
- > Upholstery in black/orange fabric
- > Velour floor mats with edition #1 lettering

**Sports package**

- > 3-spoke multi-function sports steering wheel in perforated leather<sup>2</sup>
- > 16" 8-Y-spoke alloy wheels painted in black
- > Exhaust system with chrome-plated tailpipe
- > Sports pedals in brushed stainless steel with rubber studs
- > Suspension lowered by 10 mm

**Comfort package**

- > Height-adjustable driver's seat
- > Height-adjustable steering wheel
- > Heated and electrically adjustable exterior mirrors

**Premium package**

- > Comfort package
- > Rear parking assistance
- > smart Media-System: 7" capacitive multi-touch display; FM twin tuner and AM tuner; AUX/USB interface (centre console); voice control; Bluetooth® interface with hands-free system; audio streaming for music transfer; 3D navigation system with maps for the whole of Europe incl. 3 years of LIVE services (individually extendable thereafter); 4 speakers incl. 2 tweeters in mirror triangle

**Premium Plus package**

- > Comfort/Premium package
- > Ambient lighting: when driving at night, ambient lighting emphasises the stylish interior. Fibre optic cables in the door trim, centre console and footwell provide indirect, soft light
- > Front fog lamps
- > Headlamps with LED light guide and LED tail lights: H4 halogen headlamps with Welcome-Function and fibre optic daytime running lamps and tail lights in semi-LED technology as well as direction indicators integrated into the front bumper below headlamps
- > Rain/light sensor: rain sensor controls the windscreen wipers, adapting wipe intervals to amount of rainfall. The accompanying light sensor automatically activates driving lights
- > Rear view camera

<sup>1</sup>Including sunglasses holder for driver and grab handle for front passenger.

<sup>2</sup>With gear shift paddles for models with twinamic automatic transmission.

## » Optional equipment. Packages.

Code	Optional equipment packages	passion	prime	proxy	Total RRP incl. VAT excl. VAT
P74	<b>Comfort package</b> <ul style="list-style-type: none"> <li>&gt; Height-adjustable driver's seat</li> <li>&gt; Height-adjustable steering wheel</li> <li>&gt; Heated and electrically adjustable exterior mirrors</li> </ul>	●	●	●	<b>295.00</b> 245.83
DA1	<b>Premium package</b> <ul style="list-style-type: none"> <li>&gt; Comfort package</li> <li>&gt; Rear parking assistance</li> <li>&gt; smart Media-System:               <ul style="list-style-type: none"> <li>7" capacitive multi-touch display; FM twin tuner and AM tuner;</li> <li>AUX/USB interface (centre console); voice control; Bluetooth® interface with hands-free system; audio streaming for music transfer; 3D navigation system with maps for the whole of Europe incl. 3 years of LIVE services (individually extendable thereafter);</li> <li>4 speakers incl. 2 tweeters in mirror triangle</li> </ul> </li> </ul>	●	●	●	<b>795.00</b> 662.50
DA2	<b>Premium Plus package</b> <ul style="list-style-type: none"> <li>&gt; Comfort/Premium package</li> <li>&gt; Ambient lighting: when driving at night, ambient lighting emphasises the stylish interior. Fibre optic cables in the door trim, centre console and footwell provide indirect, soft light</li> <li>&gt; Front fog lamps</li> <li>&gt; Headlamps with LED light guide and LED tail lights:               <ul style="list-style-type: none"> <li>H4 halogen headlamps with Welcome-Function and fibre optic daytime running lamps and tail lights in semi-LED technology as well as direction indicators integrated into the front bumper below headlamps</li> </ul> </li> <li>&gt; Rain/light sensor: rain sensor controls the windscreen wipers, adapting wipe intervals to amount of rainfall. The accompanying light sensor automatically activates driving lights</li> <li>&gt; Rear view camera</li> </ul>	—	●	●	<b>1,295.00</b> 1,079.17
P88	<b>edition #1</b> <ul style="list-style-type: none"> <li>&gt; Sports package; Comfort package; Premium package; Premium Plus package</li> <li>&gt; bodypanels in white</li> <li>&gt; Dashboard and door centre panel in orange fabric and black highlights</li> <li>&gt; Dashboard instruments with cockpit clock and rev counter</li> <li>&gt; edition #1 badge in mirror triangle</li> <li>&gt; Panoramic roof with sun protection<sup>1</sup></li> <li>&gt; Radiator trim in white</li> <li>&gt; tridion safety cell in lava orange</li> <li>&gt; Upholstery in black/orange fabric</li> <li>&gt; Velour floor mats with edition #1 lettering</li> </ul>	●	—	—	<b>2,100.00</b> 1,750.00

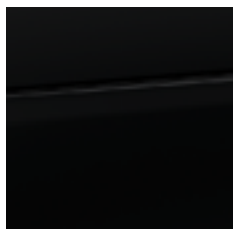
☐ Standard  
☒ Available at additional cost  
☐ Available as an option at no additional cost  
 — Not available

<sup>1</sup>Including sunglasses holder for driver and grab handle for front passenger.

## »Body colours.

Exterior.

### bodypanels



black (solid colour)  
[ECAO]



white (solid colour)  
[EAZO]



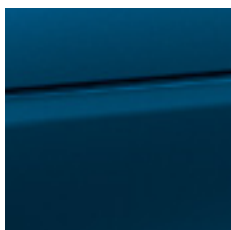
cool silver  
(metallic) [EDAO]



hazel brown  
(metallic) [EBBO]



lava orange  
(metallic) [EDBO]



midnight blue  
(metallic) [EDDO]



moon white (matt)  
[EDEO]



titania grey (matt)  
[EAIO]

### tridion safety cell



black (solid colour)  
[EN1U]



white (solid colour)  
[EN3U]



cool silver  
(metallic) [EN2U]

### Radiator trim



black (solid colour)  
[4U2]



white (solid colour)  
[4U3]



cool silver  
(metallic) [4U4]

» **Body colours.**

## Exterior.

Code	Exterior	passion	prime	proxy	edition #1	Total RRP incl. VAT excl. VAT
<b>bodypanels</b>						
EAZO	white (solid colour)	○	○	○	□	—
ECAO	black (solid colour)	○	○	○	—	—
EDAO	cool silver (metallic)	●	●	●	—	<b>295.00</b> 245.83
EBBO	hazel brown (metallic)	●	●	●	—	<b>295.00</b> 245.83
EDBO	lava orange (metallic)	●	●	●	—	<b>295.00</b> 245.83
EDDO	midnight blue (metallic)	●	●	●	—	<b>295.00</b> 245.83
EDEO	moon white (matt)	●	●	●	—	<b>395.00</b> 329.17
EAIO	titania grey (matt)	●	●	●	—	<b>395.00</b> 329.17
<b>tridion safety cell</b>						
EN1U	black (solid colour)	○	○	○	—	—
EN3U	white (solid colour)	●	●	○	—	<b>200.00</b> 166.67
EN2U	cool silver (metallic)	●	●	●	—	<b>200.00</b> 166.67
<b>Radiator trim</b>						
4U2	black (solid colour)	○	○	○	—	—
4U3	white (solid colour) <sup>1</sup>	○	○	○	□	—
4U4	cool silver (metallic) <sup>1</sup>	○	○	○	—	—

<sup>1</sup>Only in conjunction with bodypanels or tridion safety cell in the same colour.

□ Standard  
 ● Available at additional cost  
 ○ Available as an option at no additional cost  
 — Not available

## » Optional equipment. Interior.

### Options



JBL sound system incl. 6-channel DSP amplifier (240 W), 8 speakers, removable subwoofer in the luggage compartment [810]



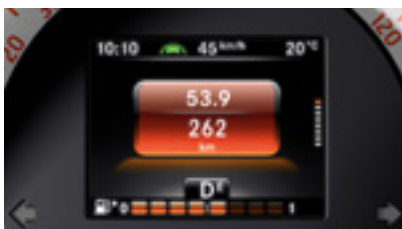
Smartphone cradle for smart Audio-System [C67]



Digital radio (DAB) [C04]



Forward collision warning [252]



Lane Keeping Assist with acoustic and visual warning [238]



Heated seats for driver and front passenger [873]



twinamic 6-speed dual clutch automatic transmission [429]

» **Optional equipment.**

Interior, functions and electrics, safety and assistance systems.

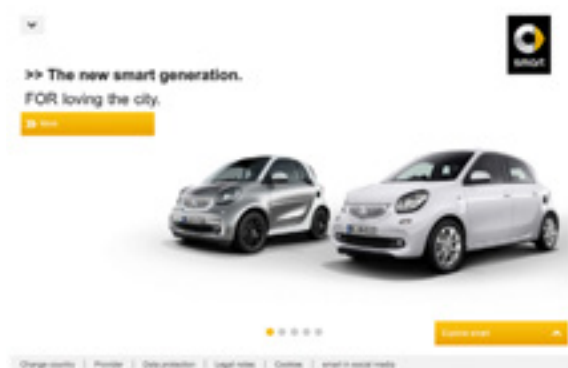
Code	Optional equipment	passion	prime	proxy	Total RRP incl. VAT excl. VAT
<b>Interior</b>					
52U	Dashboard and door centre panel – black fabric and white highlights	○	—	—	—
03U	Upholstery in black/white fabric	○	—	—	—
56U	Dashboard and door centre panel – black fabric	○	□	—	—
07U	Upholstery in black/grey fabric	○	—	—	—
873	Heated seats for driver and front passenger	●	□	●	<b>195.00</b> 162.50
<b>Functions and electrics</b>					
429	twinamic 6-speed dual clutch automatic transmission	●	●	●	<b>995.00</b> 829.17
C04	Digital radio (DAB)	●	●	●	<b>195.00</b> 162.50
810	JBL sound system <sup>1</sup>	●	●	●	<b>445.00</b> 370.83
C67	Smartphone cradle	●	●	●	<b>55.00</b> 45.83
<b>Safety and assistance systems</b>					
252	Forward collision warning with acoustic and visual warning	●	●	●	<b>195.00</b> 162.50
238	Lane Keeping Assist with acoustic and visual warning	●	□	□	<b>295.00</b> 245.83

» **smart configurator.****www.thesmart.co.uk – open around the clock.**

Whatever you're looking for, at [www.thesmart.co.uk](http://www.thesmart.co.uk) you'll find the whole world of smart at a glance.

The smart configurator allows you to put together the smart that's best suited to you. You can also locate your nearest smart Retailer and keep up to date on the latest developments and campaigns at smart.

At [www.thesmart.co.uk](http://www.thesmart.co.uk) you can always be sure you are right up to the minute with the latest news on smart.



- Standard
- Available at additional cost
- Available as an option at no additional cost
- Not available

<sup>1</sup>Only in conjunction with Comfort package [P74].

## » Accessories.

### Options



Universal smartphone holder  
[A4538201300]



Velour floor mats, front, set of 2  
[A45368085039J74]



Velour floor mats, rear, set of 2  
[A45368090039J74]



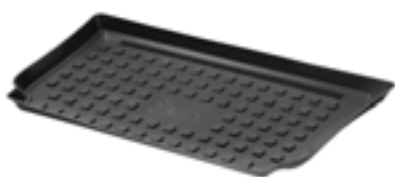
Smartphone charging cable  
[A2228204701]



Smartphone charging cable  
[A2228204801]



Smartphone charging cable  
[A2228204901]



Shallow boot tub [A4538140141]



Reversible mat [A4536806203]



Cool bag [A4518200006]



Luggage net [A4538680174]

## » Accessories.

Code	Accessories	Total RRP incl. VAT excl. VAT
A4538201300	<b>Universal smartphone holder</b> > Keep an eye on your smartphone and your hands on the wheel with a smart smartphone cradle. It fixes almost any smartphone <sup>1</sup> in the driver's line of sight, swivels a handy 90 degrees and even has a USB charging point. Use with the smart cross connect app for the ultimate smart infotainment solution including clever navigation and media features.  <b>smart cross connect app<sup>2</sup></b> > Unlock clever media and navigation features with the smart cross connect app. Use the navigation function to find parking spaces and evaluate your driving behaviour to help you adopt a more fuel-efficient style of driving. Call your friends. And play your favourite tunes. All within one easy-to-use app. The smart cross connect app starts automatically when the smartphone is linked up to the car via Bluetooth® with the main menu displayed in easy-to-read landscape format on the smartphone's screen.	<b>55.00</b> 45.83
A2228204701	<b>Smartphone charging cable</b> > USB to iPod® connector (previous generation Apple 30-pin dock connector)	<b>25.00</b> 20.83
A2228204801	<b>Smartphone charging cable</b> > USB to micro-USB cable	<b>10.00</b> 8.33
A2228204901	<b>Smartphone charging cable</b> > USB to Apple Lightning connector	<b>25.00</b> 20.83
A45368085039J74	<b>Velour floor mats, front – set of 2</b> > Elegant, high-quality tufted velour mats, with embroidered smart lettering. Available in black.	<b>42.00</b> 35.00
A45368090039J74	<b>Velour floor mats, rear – set of 2</b>	<b>25.00</b> 20.83
A4538140141	<b>Shallow boot tub</b> > The waterproof, non-slip material protects the luggage compartment lining from wet, dirt and wear.	<b>45.00</b> 37.50
A4536806203	<b>Reversible mat</b> > The reversible mat has a high-quality velour side and a non-slip side. It helps keep the original floor of the load compartment clean.	<b>46.00</b> 38.33
A4518200006	<b>Cool bag</b> > For cool drinks in a smart design. The cool bag with a fabric covering can be connected to the 12 V socket and has a capacity of 12 litres. An optional power converter is available for the cool bag for use at a home on a 230 V socket.	<b>100.00</b> 83.33
A4538680174	<b>Luggage net</b> > Prevents lightweight objects from sliding around during the journey. The net is fastened to the luggage compartment floor with Velcro.	<b>37.00</b> 30.83

<sup>1</sup> For iOS and selected Android smartphones. For compatibility see smart.com/connect. Only in conjunction with smart Audio-System.<sup>2</sup> iOS 7 or higher. Optimised for iPhone® 4s, 5, 5c and 5s. Android 4.2 or higher. Optimised for Samsung Galaxy S4a.



» **Optional equipment.**

## Colour combinations.

For a harmonious look select the colour of the radiator trim in black, white or cool silver to match the bodypanel colour. If you choose a different bodypanel colour, coordinate the colour of the radiator trim with the colour of the tridion safety cell.

<b>tridion</b>  <b>bodypanels</b>	black (solid colour)	white (solid colour)	cool silver (metallic)
black (solid colour)	●	●	●
white (solid colour)	●	●	●
cool silver (metallic)	●	●	●
hazel brown (metallic)	●	●	●
lava orange (metallic)	●	●	●
midnight blue (metallic)	●	●	●
moon white (matt)	●	—	●
titania grey (matt)	●	—	●

» **Optional equipment.**

Colour combinations.

	passion			prime	proxy	edition #1
<b>Interior</b>	Dashboard and door centre panel – orange fabric and black highlights, upholstery in black/orange fabric	Dashboard and door centre panel – black fabric and white highlights, upholstery in black/white fabric	Dashboard and door centre panel – black fabric and grey highlights, upholstery in black/grey fabric	Dashboard and door centre panel – black fabric and black/grey highlights, upholstery in black leather with grey stitching	Dashboard and door centre panel – blue fabric and white highlights, upholstery in leather look with white/blue fabric	Dashboard and door centre panel – orange fabric and black highlights, upholstery in black/orange fabric
<b>bodypanels</b>						
black (solid colour)	●	●	●	●	●	—
white (solid colour)	●	●	●	●	●	●
cool silver (metallic)	●	●	●	●	●	—
hazel brown (metallic)	—	●	●	●	—	—
lava orange (metallic)	●	●	●	●	—	—
midnight blue (metallic)	—	●	●	●	●	—
moon white (matt)	●	●	●	●	●	—
titania grey (matt)	●	●	●	●	●	—

● Available — Not available

## » Technical data.

	71 hp (52 kW) with automatic start/ stop	71 hp (52 kW) with automatic start/ stop
<b>Engine type</b>	3-cylinder in-line	3-cylinder in-line
<b>Engine capacity in cc</b>	999	999
<b>Max. power in hp (kW) at rpm<sup>1</sup></b>	71 (52)/6,000	71 (52)/6,000
<b>Max. torque in Nm at rpm<sup>1</sup></b>	91/2,850	91/2,850
<b>Compression ratio</b>	10.5:1	10.5:1
<b>Fuel delivery</b>	Petrol injection	Petrol injection
<b>Maximum speed in mph</b>	94 <sup>2</sup>	94 <sup>2</sup>
<b>Acceleration 0–62 mph in s</b>	14.4	15.1
<b>Engine position/drive</b>	Transverse, rear-wheel drive	Transverse, rear-wheel drive
<b>Transmission</b>	5-speed manual	6-speed dual clutch auto.
<b>Fuel consumption in mpg:<sup>3,4</sup></b>		
urban cycle	57.7	60.1
extra-urban cycle <sup>5</sup>	76.4	76.4
combined cycle	68.9	68.9
<b>Fuel type</b>	Premium unleaded	Premium unleaded
<b>Exhaust gas purification/ exhaust gas standard</b>	3-way catalytic converter/EU6	3-way catalytic converter/EU6
<b>CO<sub>2</sub> emissions (combined) in g/km<sup>4</sup></b>	93	94
<b>Wheels//tyres (front; rear): passion, prime</b>	5.0 J x 15//165/65 R 15; 5.5 J x 15//185/60 R 15	5.0 J x 15//165/65 R 15; 5.5 J x 15//185/60 R 15
<b>Wheels//tyres (front; rear): proxy, edition #1</b>	6.0 J x 16//185/50 R 16; 6.5 J x 16//205/45 R 16	6.0 J x 16//185/50 R 16; 6.5 J x 16//205/45 R 16
<b>Vehicle length/width/height in mm</b>	2,695/1,663/1,555	2,695/1,663/1,555
<b>Track width (front/rear) in mm</b>	1,469/1,430	1,469/1,430
<b>Wheelbase in mm</b>	1,873	1,873
<b>Turning circle in m</b>	6.95	6.95
<b>Kerb weight/payload in kg<sup>6</sup></b>	880/270	935/245
<b>Permissible total weight in kg</b>	1,150	1,180
<b>Luggage compartment capacity in l</b>	260–350	260–350
<b>Tank capacity/of which reserve in l</b>	35/5.0	35/5.0
<b>Insurance group rating</b>	3E	tba
<b>Service interval<sub>8</sub></b>	12,500 miles/1 year	12,500 miles/1 year
<b>Warranty in years</b>	3 unlimited	3 unlimited
<b>Guaranteed mobility in years</b>	up to 30 <sup>9</sup>	up to 30 <sup>9</sup>

<sup>1</sup>Figures according to Directive 80/1269/EEC in the current applicable version. <sup>2</sup>Electronically limited. <sup>3</sup>All figures are based on a standard specification with smallest tyre size.<sup>4</sup>The choice of wheels and transmissions may affect CO<sub>2</sub> emissions and corresponding Road Fund Licence. <sup>5</sup>EUDC: extra-urban driving cycle. Testing procedures adhere to EU Directive 93/116. <sup>6</sup>Figures in accordance with Directive 92/21/EC in the version 95/48/EC mass in running order, fuel tank 90% full, with driver, 68 kg and luggage, 7 kg for vehicles with standard equipment. Optional equipment and accessories generally increase this figure, which means that the payload is reduced accordingly.<sup>7</sup>proxy, Premium Plus package and edition #1 only. <sup>8</sup>Whichever comes first, service interval shown via multifunction display. An oil change plus has to be carried out every 12,500 miles or once a year. <sup>9</sup>Subject to full Terms and Conditions, dependent on date of registration, available upon request.Figures are correct at the time of going to print. Please refer to the government website for latest data – [www.vca.gov.uk](http://www.vca.gov.uk)

	90 hp (66 kW) turbo with automatic start/stop	90 hp (66 kW) turbo with automatic start/stop
<b>Engine type</b>	3-cylinder in-line	3-cylinder in-line
<b>Engine capacity in cc</b>	898	898
<b>Max. power in hp (kW) at rpm<sup>1</sup></b>	90 (66)/5,500	90 (66)/5,500
<b>Max. torque in Nm at rpm<sup>1</sup></b>	135/2,500	135/2,500
<b>Compression ratio</b>	9.5:1	9.5:1
<b>Fuel delivery</b>	Petrol injection	Petrol injection
<b>Maximum speed in mph</b>	96 <sup>2</sup>	96 <sup>2</sup>
<b>Acceleration 0–62 mph in s</b>	10.4	10.4
<b>Engine position/drive</b>	Transverse, rear-wheel drive	Transverse, rear-wheel drive
<b>Transmission</b>	5-speed manual	6-speed dual clutch auto.
<b>Fuel consumption in mpg:<sup>3,4</sup></b>		
urban cycle	57.7	56.5
extra-urban cycle <sup>5</sup>	76.4	78.5
combined cycle	67.3	68.9
<b>Fuel type</b>	Premium unleaded	Premium unleaded
<b>Exhaust gas purification/ exhaust gas standard</b>	3-way catalytic converter/EU6	3-way catalytic converter/EU6
<b>CO<sub>2</sub> emissions (combined) in g/km<sup>4</sup></b>	97	96
<b>Wheels//tyres (front; rear): passion, prime</b>	5.0 J x 15//165/65 R 15; 5.5 J x 15//185/60 R 15	5.0 J x 15//165/65 R 15; 5.5 J x 15//185/60 R 15
<b>Wheels//tyres (front; rear): proxy, edition #1</b>	6.0 J x 16//185/50 R 16; 6.5 J x 16//205/45 R 16	6.0 J x 16//185/50 R 16; 6.5 J x 16//205/45 R 16
<b>Vehicle length/width/height in mm</b>	2,695/1,663/1,555	2,695/1,663/1,555
<b>Track width (front/rear) in mm</b>	1,469/1,430	955/240
<b>Wheelbase in mm</b>	1,873	1,195
<b>Turning circle in m</b>	6.95	6.95
<b>Kerb weight/payload in kg<sup>6</sup></b>	880/270	880/270
<b>Permissible total weight in kg</b>	1,170	1,170
<b>Luggage compartment capacity in l</b>	260–350	260–350
<b>Tank capacity/of which reserve in l</b>	35/5.0	35/5.0
<b>Insurance group rating</b>	8E/9E <sup>7</sup>	8E/9E <sup>7</sup>
<b>Service interval<sup>8</sup></b>	12,500 miles/1 year	12,500 miles/1 year
<b>Warranty in years</b>	3 unlimited	3 unlimited
<b>Guaranteed mobility in years</b>	up to 30 <sup>9</sup>	up to 30 <sup>9</sup>

## » Warranty and servicing.

### smart move assist.

In good hands. The international smart move assist service provides free breakdown assistance in emergencies. Around the clock and 365 days a year. Your smart comes with a year's cover, which is renewed annually following a service with your local smart Retailer. Further information can be found in your owner's manual.

### Full flexibility. Not just in road traffic.

The new manufacturer's warranty without mileage restrictions from smart offers you a comprehensive scope of protection. We also offer smart Service Care, which is a service plan designed to take care of your servicing costs for the next two, three or four services. smart Service Care is a great way of keeping your smart in the best shape at a Retailer whilst keeping the costs as transparent as possible.

### Warranty.

3 year warranty on new cars without mileage restrictions, for complete peace of mind.  
Corrosion cover warranty is 12 years on new cars.

### smart Service Care.

With smart Service Care from £15.00 per month, it's easy to enjoy more flexible and affordable car servicing at your local smart Retailer.

Because Service Care guarantees the price of parts and labour for up to four services and cleverly protects you against any further inflationary rises, the price will never go up. It also includes regular service items like spark plugs, air filters and fuel filters.

	2 services		3 services			4 services			
Model	12 months	24 months	12 months	24 months	36 months	12 months	24 months	36 months	48 months
New smart	£30.00	£15.00	£45.00	£22.50	£15.00	£60.00	£30.00	£20.00	£15.00

### But that's not all.

You'll have a choice of easy ways to pay as well. You can either add your servicing costs to your monthly budget from £15.00, or pay all your servicing costs in one lump sum. Either way, you can relax knowing it's taken care of in the best way for you.

- Service Care guarantees the price you pay today is the price for the next two, three or four services, so what you pay won't go up even if inflation does.
- Monthly costs from £15.00 make it easier for you to budget because you can spread the cost of servicing.
- You'll be adding an official stamp to your service history. So when it comes to selling your pride and joy on, future owners can look for the manufacturers' seal of approval when they buy.
- You'll have the satisfaction of knowing that your car will be serviced by specially trained technicians, using the latest diagnostic equipment and smart GenuineParts.
- Fully transferable to a new owner if you sell your smart, providing the plan is paid for in one lump sum.

## » smart electric bike.



matt grey/flame orange



crystal white/electric green

Recommended retail price (incl.VAT)	£1,800
<b>Motor</b>	brushless BionX electric rear-wheel hub motor; four drive and four generator levels available
<b>Power in W</b>	200
<b>Torque in Nm</b>	35
<b>Top speed in mph</b>	15
<b>Gear shift</b>	integrated SRAM I-Motion 3 (3-speed hub gear system)
<b>Battery</b>	423 Wh lithium-ion battery, 48 V, 3.3 kg, detachable
<b>Range in miles</b>	up to 62
<b>Charge time in hours</b>	0–100% approx. 5; 20–80% approx. 3
<b>Belt</b>	Gates carbon-toothed belt 118T
<b>Brakes</b>	Magura MT4 hydraulic disc brakes, 180 mm, with recuperation function
<b>Materials</b>	aluminium frame and fork
<b>Tyres</b>	Continental EcoContact Plus, 26" x 1.75"
<b>Lights</b>	LED daytime running lights, front and rear
<b>Information</b>	BionX control console (controls drive/generator levels, trip computer, etc.)
<b>Connectivity</b>	USB interface
<b>Dimensions in mm</b>	1,735/755/990 (length/width/height)
<b>Weight in kg</b>	26.1

» **Vehicle Excise Duty.**

Road Fund Licence.

**Vehicle Excise Duty**

Band	CO <sub>2</sub> emissions	First year rate (£) <sup>1</sup>	Standard rate (£)
A	up to 100 g/km	0.00	0.00
B	101 to 110 g/km	0.00	20.00
C	111 to 120 g/km	0.00	30.00
D	121 to 130 g/km	0.00	110.00
E	131 to 140 g/km	130.00	130.00
F	141 to 150 g/km	145.00	145.00
G	151 to 165 g/km	180.00	180.00
H	166 to 175 g/km	295.00	205.00
I	176 to 185 g/km	350.00	225.00
J	186 to 200 g/km	490.00	265.00
K	201 to 225 g/km	640.00	290.00
L	226 to 255 g/km	870.00	490.00
M	over 255 g/km	1,100.00	505.00


Please refer to technical data on page 16 for combined CO<sub>2</sub> emissions.





**smart infocentre 0333 222 0600**

 **[www.facebook.com/smartcaruk](http://www.facebook.com/smartcaruk)**

 **[@smartcarUK](https://twitter.com/smartcarUK)**

This publication is applicable exclusively in the United Kingdom. All statements concerning availability of types, standard equipment, prices and legal or tax regulations are valid only for the United Kingdom. We reserve the right to change design features, scope of delivery and prices. (Publication approval date: June 2015.)