

smart
open your mind.

>> Collection 2011/2012.
Urban Daydreams.

>> 8.15 a.m.
London.
Jogging
in Kensington.



> 13 umbrella:
asphalt, with reflective piping, "open your mind."
and pictogram print. Length: 84 cm when closed,
diameter approx. 105 cm when open

B6 799 3257



> 13



> 07



> 07 cap for women:
asphalt, made of 100% cotton, with pink accents,
embroidered pictogram, fastener with embossed
ring logo, "open your mind." on the peak and
strap. Adjustable

B6 799 3548



>> Your day.
Your city.
Your style.

Today is your day! In your city.
From Berlin to Rome or London – the
Collection from smart is at home in
every city. It is an expression of new
ideas and design, functionality and
environmental awareness. Inspired
by city life, accompanying you
throughout your day. Experience the
city, 24 hours a day.
Discover our new products!



> 01

> 01 bodywarmer for men:
black, made of 100% polyester, with hood,
soft warm lining, two side pockets and
"is greatness a matter of size?" printed
on the neck. Sizes: S-XXL

B6 799 3340-3344



> 02



>> 10.30 a.m.
Berlin.
Meeting friends
in Mitte.

> 02 hooded sweatshirt for men:
black, made of 70% cotton and 30%
polyester, with turquoise accents,
embroidery on the front and sporty
button row. Sizes: S-XXL

B6 799 3481-3485



> 03 pure cap:
black, made of 100% polyester, with cotton
lining, yellow stitching, ring logo at the
front and "open your mind." embroidered
on the back. Adjustable

B6 799 3405

> 03



> 04 pure lanyard:
black, made of 100% polyester, with
silver pure design print, snap
hook and safety clasp at the neck.

B6 799 3415

> 04



> 05



> 05 torch:
black LED torch with printed
ring logo and lettering.

B6 799 3256

> 06



> 06 key ring shopping cart chip:
Made of satinised nickel, coin with
embossed pictogram on both sides.

B6 799 3549



> 11

> 11 pure T-shirt for women:
white, made of 95% cotton and 5% elastane,
with V-neck, tailored fit, gold stitching on the
collar, sleeves and hem, "open your mind."
embroidered on the neck. Sizes: XS-XL

B6 799 3345-3349

> 12



> 12 bodywarmer for women:
night blue, made of 100% polyester, with
hood, soft warm lining, two side pockets and
"is greatness a matter of size?" printed on
the neck. Sizes: XS-XL

B6 799 3400-3404



> 08

> 08 bowling bag:
black, 100% polyester, with turquoise
accents, embossed pictogram, padded
laptop compartment and padded shoul-
der strap. Dimensions: 50 x 32 x 16 cm

B6 799 3513



> 09

> 09 laptop sleeve:
black/turquoise, both sides can be used
(reversible sleeve), made of neoprene,
impact and splash-resistant, suitable for
laptops up to 15.4".
Dimensions: 38 x 28 x 1 cm

B6 799 3508

> 10



> 10 smartphone sleeve:
black/turquoise, both sides can be used
(reversible sleeve), made of neoprene,
impact and splash-resistant, suitable for
iphone* 3 and 4 amongst others.
Dimensions: 12.5 x 7.5 x 0.4 cm

B6 799 3509



> 14 hooded sweatshirt for women:
asphalt, made of 70% cotton and 30%
polyester, tailored fit, with pink accents
and embroidery on the front and back,
drawstring. Sizes: XS-XL

B6 799 3486-3490

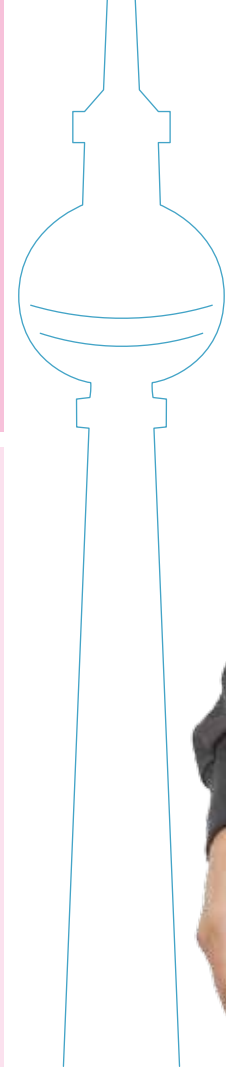
> 15 polo shirt for women:
asphalt, made of 100% cotton, tailored
fit, with pink accents and embroidery
on the front and back, gathered sleeves
and breast pocket. Sizes: XS-XL

B6 799 3491-3495



> 14

> 15



> 17

> 17 thermos flask:
matt black, made of stainless steel, with
ring logo, pictogram and "open your
mind." printed in white, practical push-
button stopper. Capacity: 0.75 l

B6 799 3519



> 18

> 18 pure T-shirt for men:
white, made of 100% cotton, with V-neck,
contrasting seams on the sleeves, grey
pure design print and "open your mind."
embroidered on the neck. Sizes: S-XXL

B6 799 3265-3269



> 19

> 19 polo shirt for men:
black, made of 100% cotton piqué, with turquoise
accents and embroidery on the front and back.
Sizes: S-XXL

B6 799 3541-3545



> 16 track jacket for men:
black, made of 100% polyester, with
urban colour print on the front
and "open your mind." embroidered
on the back. Sizes: S-XXL

B6 799 3446-3450



> 16

